

Connecting with People who May Not Think Like You

June 19, 2024





Why did people connect?

What did you notice about the people?

How did they connect?

What are some takeaways for the work you do?





Intended Outcomes

Participants will reflect on the values they bring to the educational setting and how those values impact the lens through which they engage with the adult learners they serve.





Agenda

01

**Characteristics
of Adult
Learners**

02

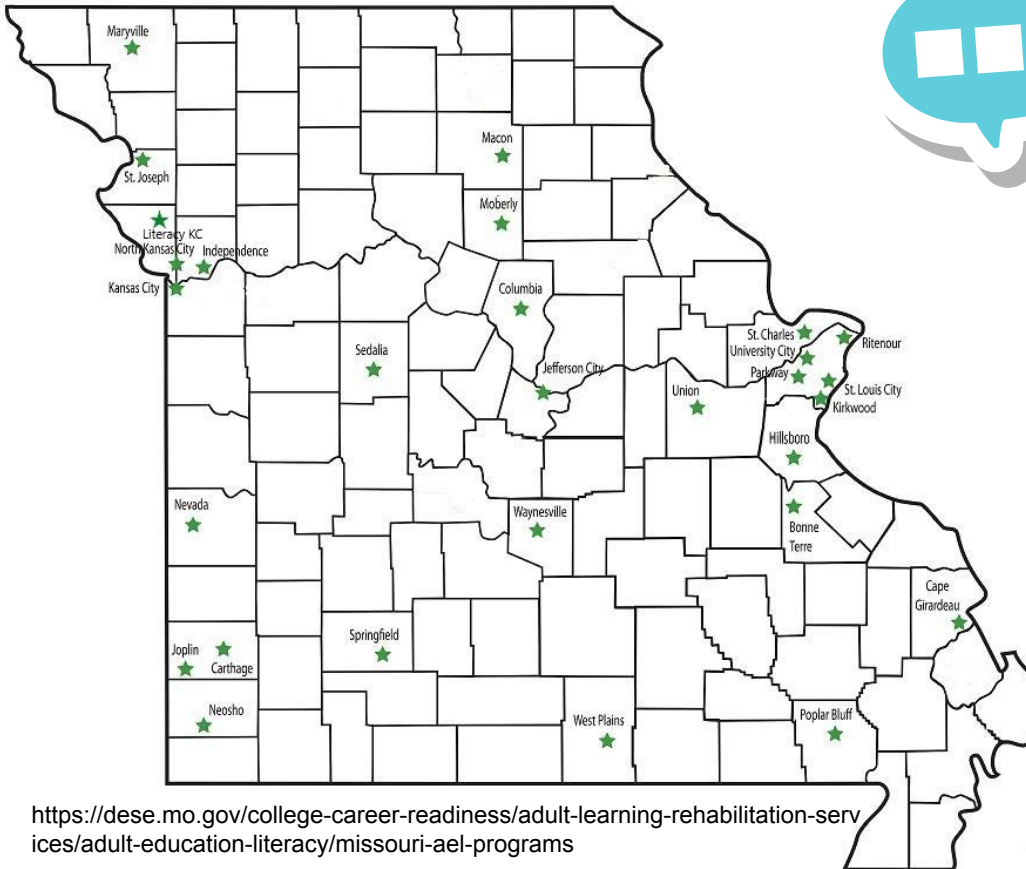
**Passing
Notes**

03

**Dialogic
Arc**

04

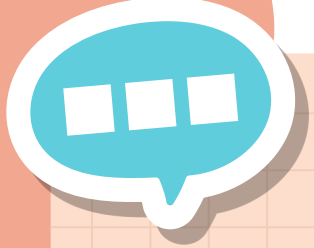
Takeaways



<https://dese.mo.gov/college-career-readiness/adult-learning-rehabilitation-services/adult-education-literacy/missouri-ael-programs>

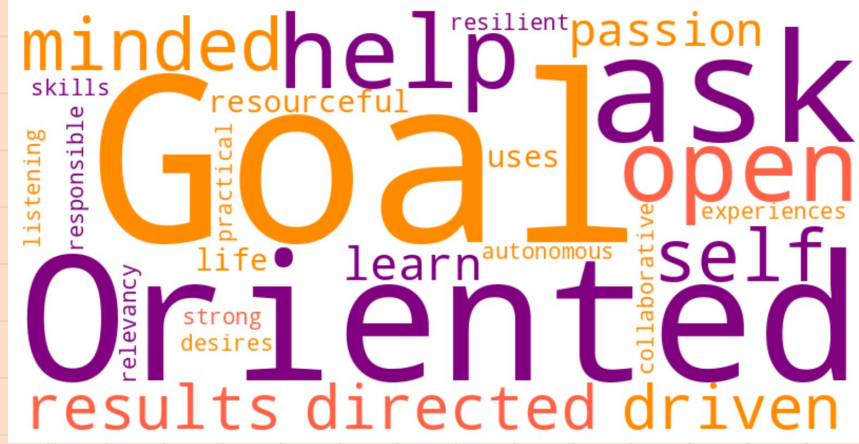


Characteristics of Adult Learners





mindful help resilient passion
skills resourceful task
listening responsible practical uses open
relevance life learn autonomous self
strong desires collaborative experiences
results directed driven



- Are these characteristics true of your adult learners?
- How do you leverage these characteristics to connect with your learners?

Passing Notes Protocol

What's one way you welcome new students to your program? Describe it below.

Reader One: Write your reactions/commentary to what was written above. You may write questions if you choose.



Passing Notes Protocol

Reader Two: Write your reactions/commentary to what was written above. You may write questions if you choose.

Reader Three: Write your reactions/commentary to what was written above. You may write questions if you choose. Once your time expires, pass this sheet back to the original author.



Dialogic Arc

A Dialogic Arc is a structured method for facilitating conversations about difficult topics.

- Foster new understanding through the exchange of perspectives/ experiences between participants
- Encourage people who have different perspectives/experiences to discover a larger, more expansive understanding of “truth” (ability to hold multiple truths)
- Personal learning that motivates social change



Dialogic Arc: Question One

“Easy Me” Question



What outcomes do you want for your learners?



Dialogic Arc: Question Two



“Hard Me” Question

How do your values/beliefs about student capability impact your ability to connect with with diverse learners?



Dialogic Arc: Question Three

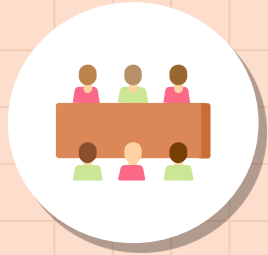
“Hard We” Question

What values and structures in our educational systems and society make it difficult to connect with diverse learners?



Dialogic Arc: Question Four

“Easy We” Question



What are some ways adult educators can create educational spaces where everyone has a connection and is supported?



Takeaways



**“Set the bar
where you
can jump
it”-Berit Gordon**

Resources

Gordon, Berit, and Jennifer Serravallo. *The Joyful Teacher: Strategies for Becoming the Teacher Every Student Deserves*. Heinemann, 2020.

<https://dese.mo.gov/college-career-readiness/adult-education-literacy/professional-development>

<https://www.msudenver.edu/9-characteristics-of-successful-adult-learners/>

<https://thelearningcoach.com/learning/characteristics-of-adult-learners/>

<https://youtu.be/GPeeZ6viNgY?si=knX1mKtfoDpEopJN>

6 Main Characteristics of Adult Learners,
www.ncda.org/aws/NCDA/asset_manager/get_file/152127?ver=3230.
Accessed 16 June 2024.





Thank You

Evelyn Gilliam, Director of Professional Learning
Ritenour School District

gilliame@ritenourschools.org